

Time is running out

Muse

Accordi strofa: A- B E F G

Rit: F G7 A- C

Bridge: D- A- finale bridge E



I think I'm drowning, asphyxiated
I wanna break this spell that you've created
Your something beautiful, a contradiction
I wanna play the game, I want the friction

You will be the death of me
Yeah, you will be the death of me

Bury it
I won't let you bury it
I won't let you smother it
I won't let you murder it

And our time is running out
And our time is running out
You can't push it underground
You can't stop it screaming out

I wanted freedom, bound and restricted
I tried to give you up, but I'm addicted
Now that you know I'm trapped, sense of elation
You'd never dream of breaking this fixation

You will squeeze the life out of me

Bury it
I won't let you bury it
I won't let you smother it
I won't let you murder it

And our time is running out
And our time is running out
You can't push it underground
You can't stop it screaming out

How did it come to this?
Ooh, yeah-yeah-yeah-yeah-yeah
Ooh, yeah-yeah-yeah-yeah-yeah
Ooh, yeah-yeah, yeah-yeah, yeah

Yeah, you will suck the life out of me

Bury it
I won't let you bury it
I won't let you smother it
I won't let you murder it

And our time is running out
And our time is running out
You can't push it underground
You can't stop it screaming out

How did it come to this?
Ooh, yeah-yeah-yeah-yeah-yeah
Ooh, yeah-yeah-yeah-yeah-yeah
Ooh, yeah-yeah, yeah-yeah, yeah

Time is running out Bass line

Muse

trascr. A. Valle

riff principale



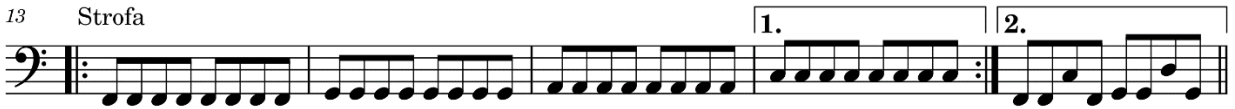
5 Strofa



9



13 Strofa



18 Break

Bridge x 3



24

